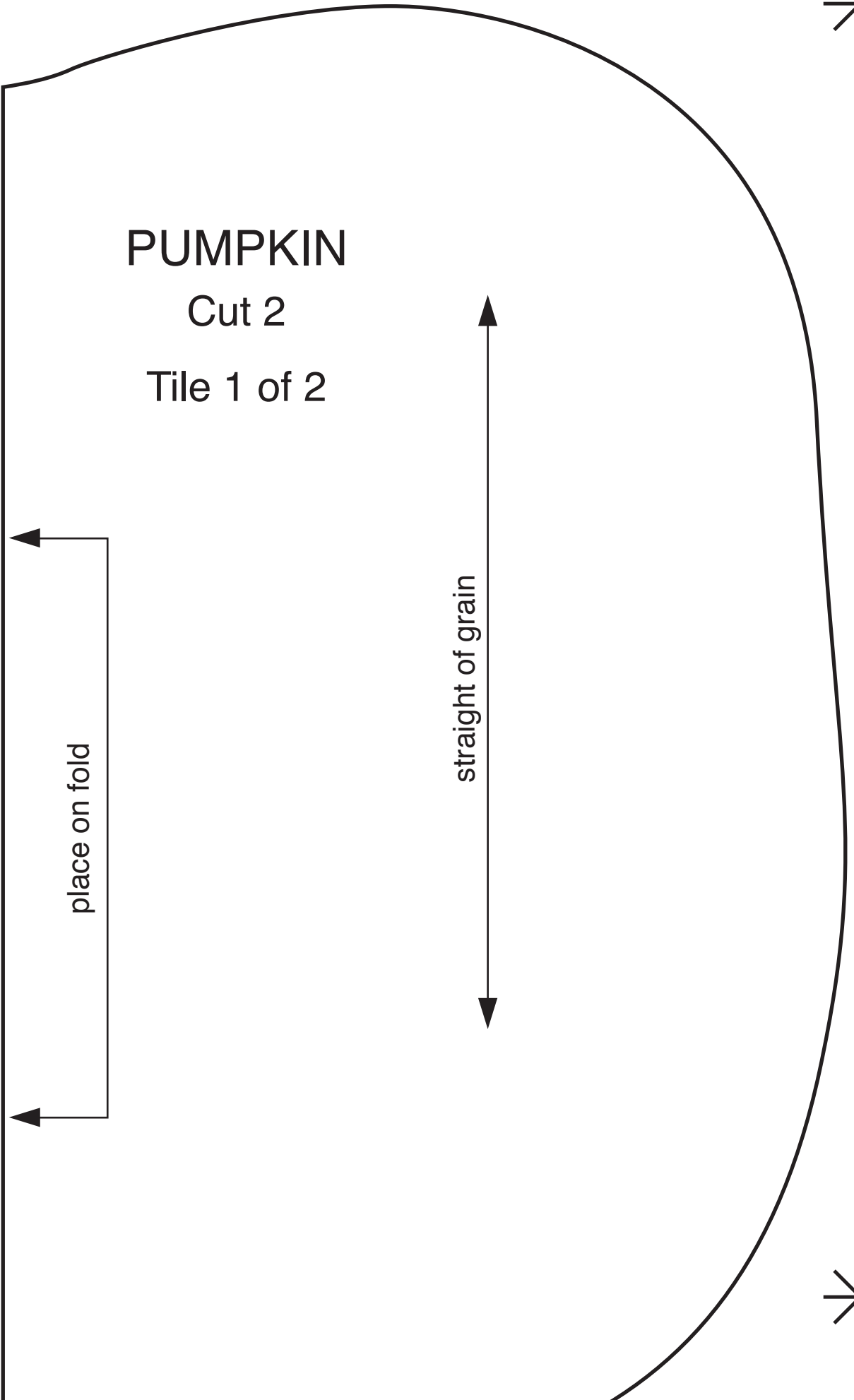


Line up the stars and tape together to create the pattern in actual size.  
Make sure your printer is NOT set to shrink or enlarge image to paper size.

# PUMPKIN

Cut 2

Tile 1 of 2

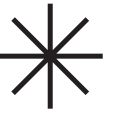


place on fold

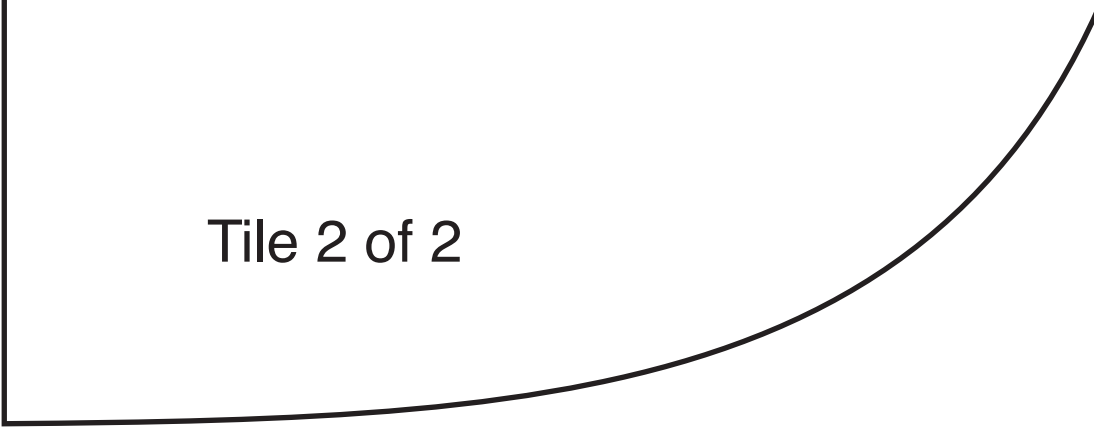


straight of grain



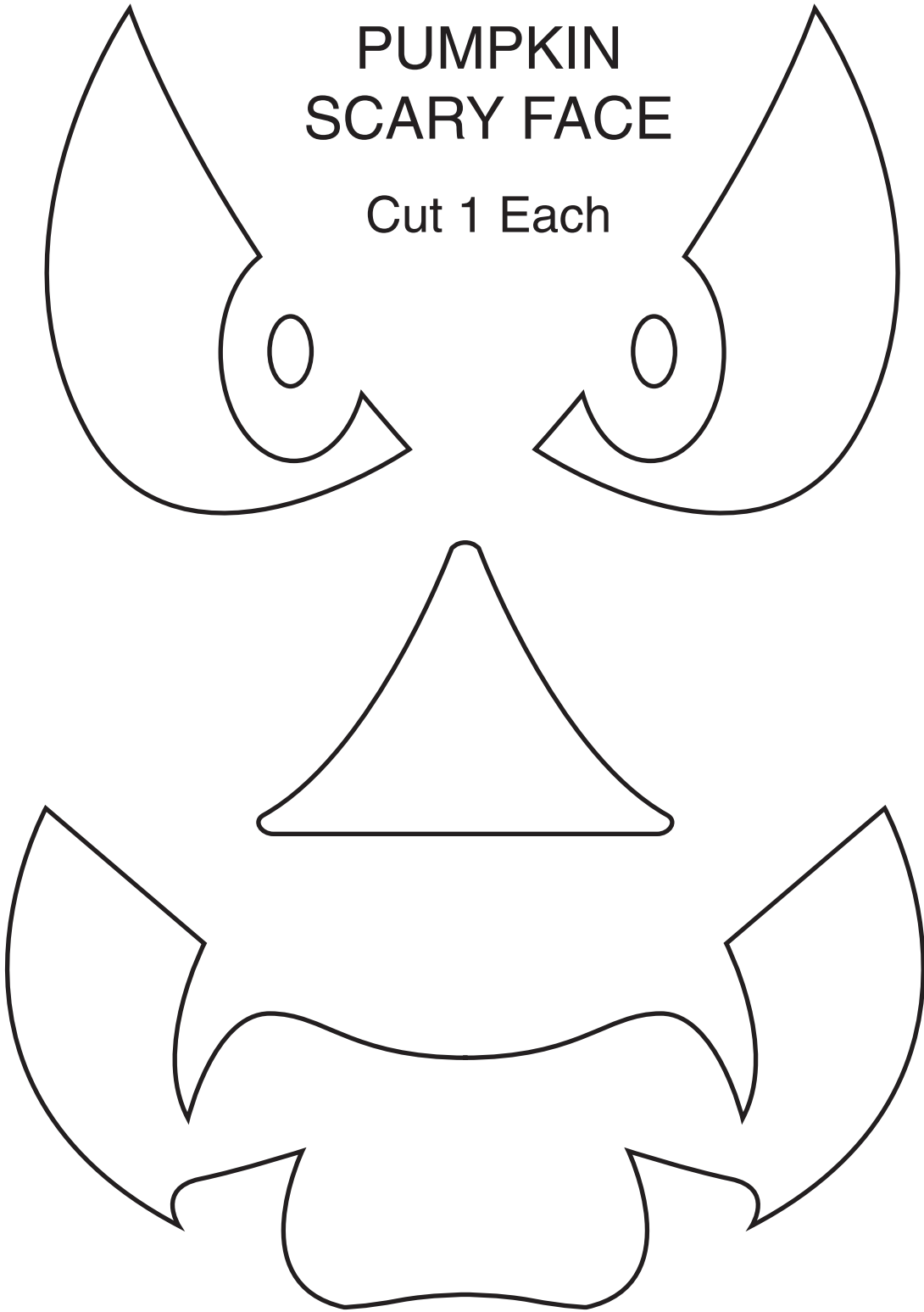


Tile 2 of 2



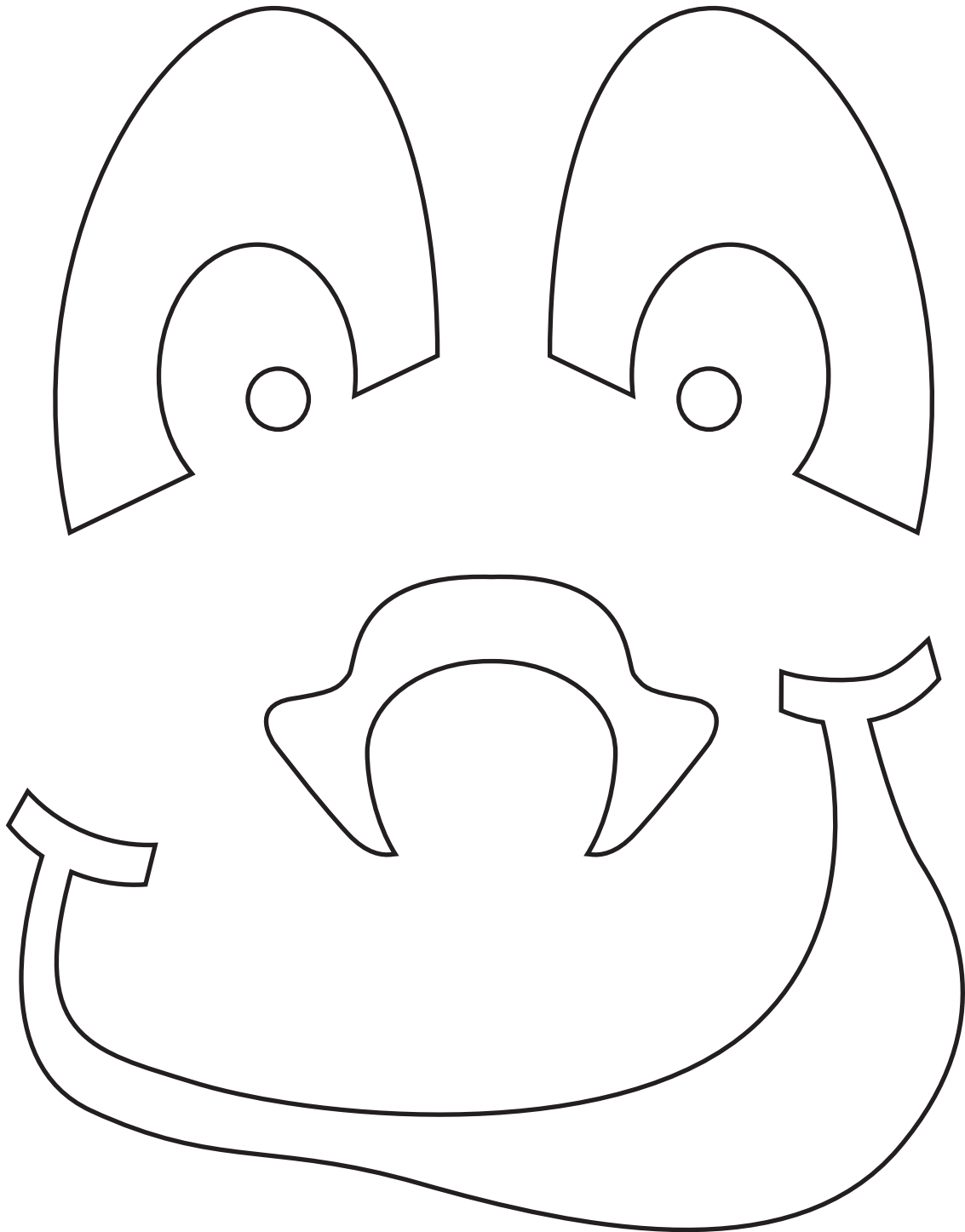
PUMPKIN  
SCARY FACE

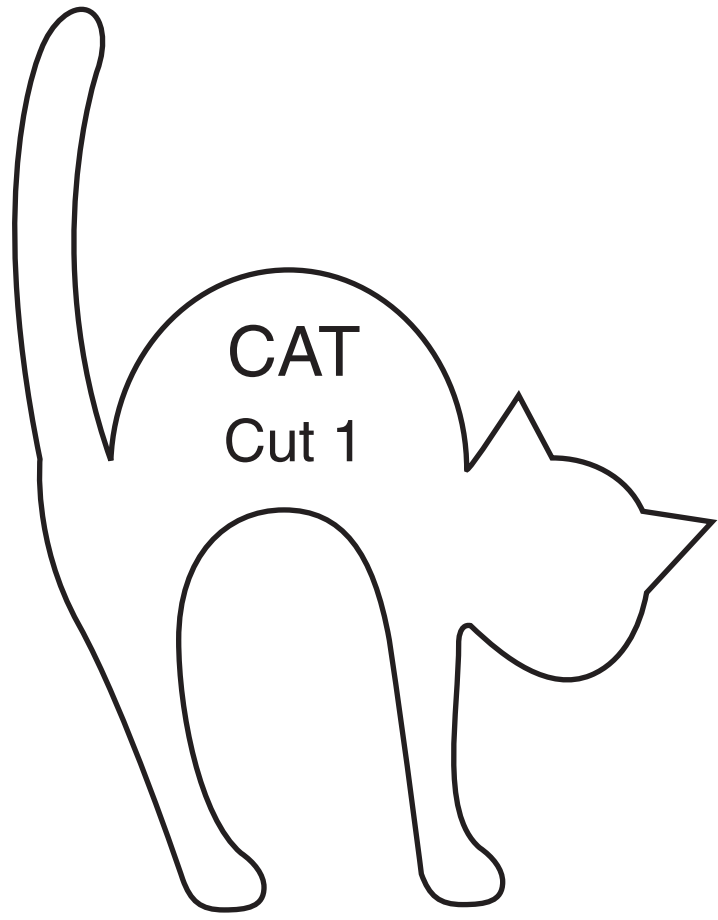
Cut 1 Each



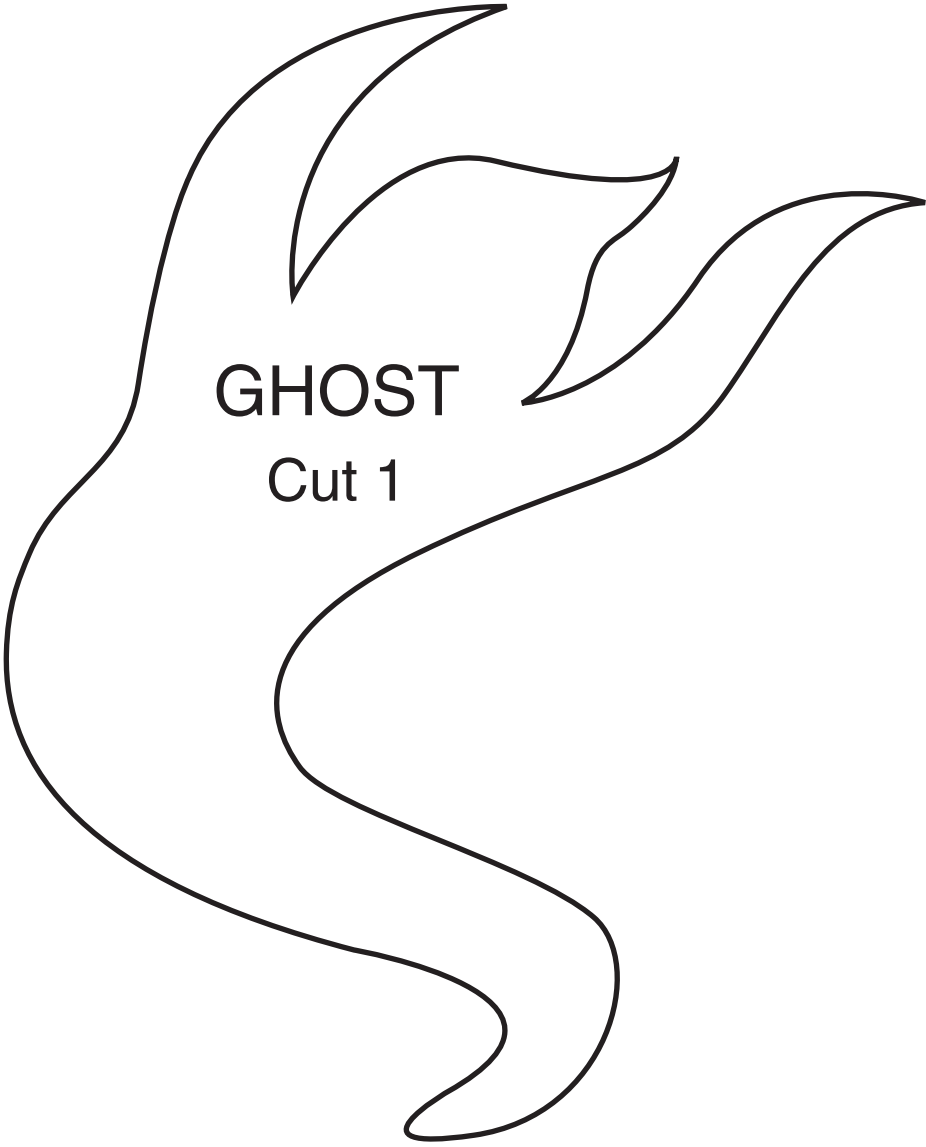
# PUMPKIN HAPPY FACE

Cut 1 Each





CAT  
Cut 1



GHOST

Cut 1



WITCH

Cut 1